

.....
.....
.....
.....
.....
.....
.....
.....
.....
.....
.....
.....

.....
.....
.....
.....
.....
.....
.....

.....
.....
.....
.....
.....

.....
.....
.....
.....
.....

1980 2 12

2004 8 28

1981 1 1

(1981年5月20日国务院批准实施)

1

2

3

1

2

3

“

”

(哈尔滨工业大学学位委员会第 156 次会议审核通过)

2009 182

“ ”

5

3

30

5

5

2-4

[2015]28

”

“

3

[2017]367

41

1

2

3

4

5

1

2

1.

2.

3.

4.

3

1.

2.

3.

4.

5.

1.

1

2

3

4

2.

1

2

3.

“ ”

4.

1

2

5.

1

2

6.

1.

2.

3.

4.

1

2

3

5

3

7

3

10

6 12

30

2017 9 1

(经 2017 年第 5 次校长办公会议审议通过, 2020 年第 1 次校长办公会议修订)

[2020]143

41

[2019]6

()

() 15

30

()

()

()

()

()

()

()

()

()

()

()

()

()

()

()

()

()

()

()

()

()

()

“ ” “ ”

()

6

()

() ()

12

()

() ()



[2017]366

41

“

”

()

()

()

()

()

5

7

10

30

6

/

2

5

2

15

15

15

2017 9 1

1

2

3

0.75 1

1 1.25

2 3

		2		
		1		
		2		
		12~14	10~12	
		6~10	8~12 ≥2	
	/	2		
		1		
		1		
		≥26	≥32	

1

1

”32

2

“

”16

1

2

“

”

32

2

3

32

2

3

6

“ ”

4

2.

1

2

2

3

1

2

50

2

2

3

1

4

5

1

4

—m

3

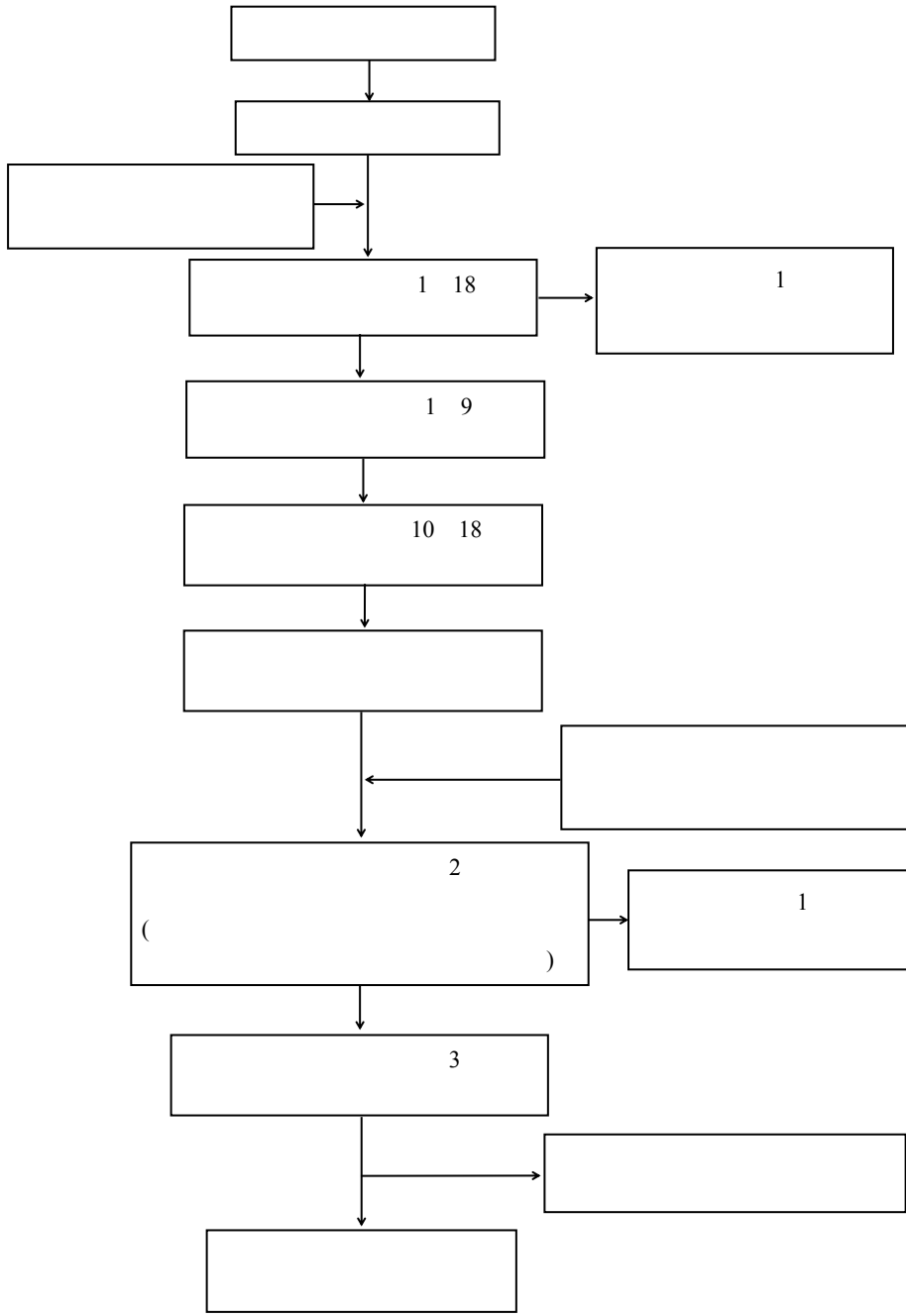
2

4

3

5

6



1

2

3

4

5

2

		2
		2
		≥4
		≥2
		1
		1
		1
		1
		≥14

1
 1 “
 ”32 2 “
 ”32 2 “ ”16 1 “ /
 ”4 0
 2 32 2
 3 3
 PETS5

“ ”

3

2.

3.

1

1

2

1

3

1

4

1

1

3

5

1

1

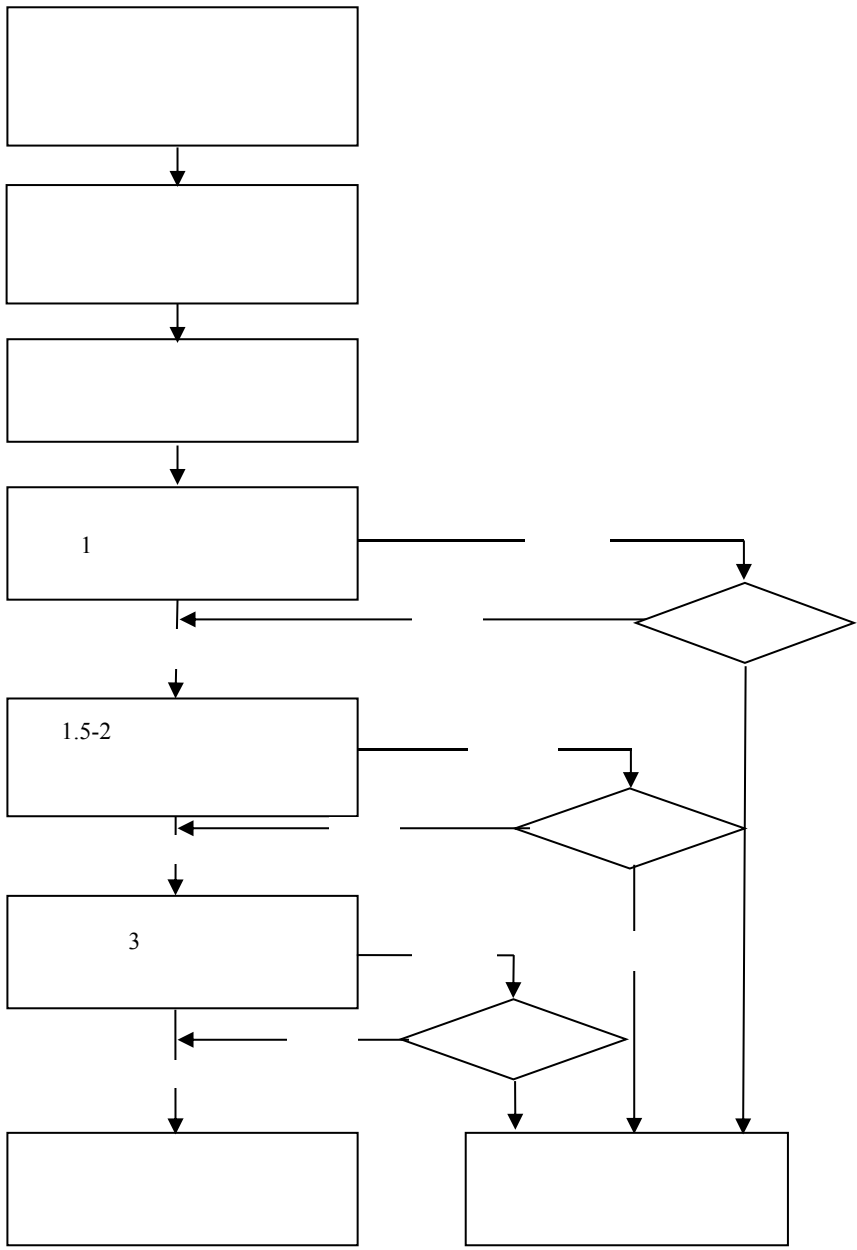
2

3

1

2

3



1 1.5
 3.5 4
 33 ≥ 5
 ≥ 16 ≥ 8 4

		2
		1
		0
		2
		≥ 16
		≥ 8
		1
		1
		1
		1
		≥ 33

1

2

4

- 1.
- 2.
- 3.
- 4.
- 5.

4

5

14

10

4

		2
		≥ 4
		≥ 4
		1
		1
		2
		≥ 14

33

		2
		1
		0
		2
		≥ 16
		≥ 8
		1
		1
		2
		≥ 33

1.

2.

3.

4.

5000

[2017]54

“ ” “ ”

90 25%
25%

“ ” “ ”

”

“ ” “

60

1/3

“0”

“ ”



“0”

2017

“ ”

1 () 70

2 CET6 460

3 TOEFL 80 (IBT)

4 IELTS 6.5

5 GRE 300

6 GMAT 650

7 WSK(PETS-5)

8 TEM-8

9

10

1

2 - 7

5

1 N1

2

3

4

1

;

2

3

“ ” “ ”
 “ ” 2~5%
 “ ”

1

$$P = \frac{1}{N} \sum_{j=1}^N P_j \quad (j \in [1, N])$$

N

P

i

j

2

$$P = \frac{1}{N} \sum_{i=1}^N P_i$$

3

$$\eta = \frac{P}{P}$$

4

$$C = (2 - \eta)$$

5

$$A = \frac{\sum_{=1}^M C}{\sum_{=1}^M}$$

M

1

2

5

3

2

4

“ ”

5

1

2

3

4

5

6

7

8

1

5000

1 2 3

4 5

2

20

3

10~15

10~15

” “ ” 25% “ ” “ ” 15%
“ ”

1

1

3 5

2

3

3

2

1

2

3

4

5

1

10~15

10~15

2

“ ”

“ ”

3

4.

1

1

2

3

4

2

1

2

1

3

10-20%

“ ” “

”

3

1
2
3
4
5
6
7
8
9

1

2
3

50

4

30

1.5

1

2

3

4

5

1

1

1

2

3-5

3

4

1

2

3

4

1

” “ ”

“

2

1

3

“ ”

3

“ ” “ ” “ ” 3 1
“ ” “ ” “ ” 1 “ ”
“ ”

1

2

3

“ ” “ ”

4

5

”

9

1

2

3

4

5

6

[2006]13

[2019]54

/

/

10

30

10

/

/

[2018]56

/ /

“ ”

1

2

3

4

5

6

“

”

1

2

3

35

,

4

5

6

18

7

8

9
10

;

5 ;
2

1
2
3

1

2

1

2

3

4

/

1

10

/

2

3

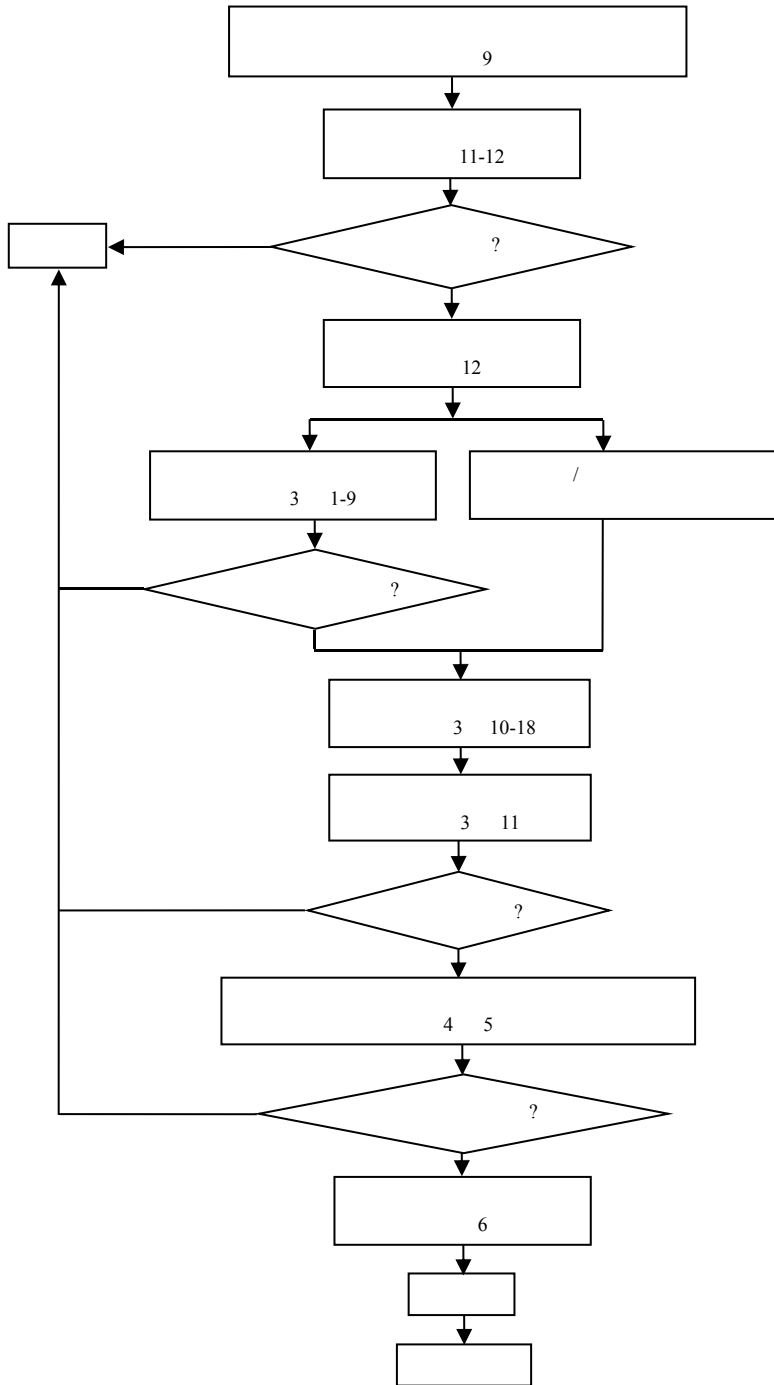
“

”

“ ”

10

3



[2019]56

“

”

“

”

6-24

2006-2020

2010-2020

/

35

18

“

”

1

2

1

2

/

/

3

5

4

PPT

5

6

2

3

3

1

<http://apply.csc.edu.cn/>

2

3

5

[2019]55

1

2

3

1

2

		/	
3			Oral
Presentation	Poster		
4			
5	2		
1			
2			
3			
4			
3-12		24	
5			
1			10
	2	5-10	
2			
3			
4.			

TOFEL IELTS GRE GMAT

TOEIC PETS5

1

1

2

2

1

2

3

3

1

/

2

/

1

2

3-12

3

1

1.2

0.6

2

1

1

0.5

2

[2012]126

3

1.2 /

1

“ + ”

2

“ ”

3

“ ” 12

/

1

5

2

3

30

6

24

4

5

“ / / ”

6

1-7

30

30

2020 1 1

[2018]58

[2018]57

1

2

3

4

5

6

7

8

9

10

1

2

3

1

2

3

4

5

6

7

8

9

(

)

4

5 7

5

1

2

3

1

2

1

2 PPT

3

20 30

4

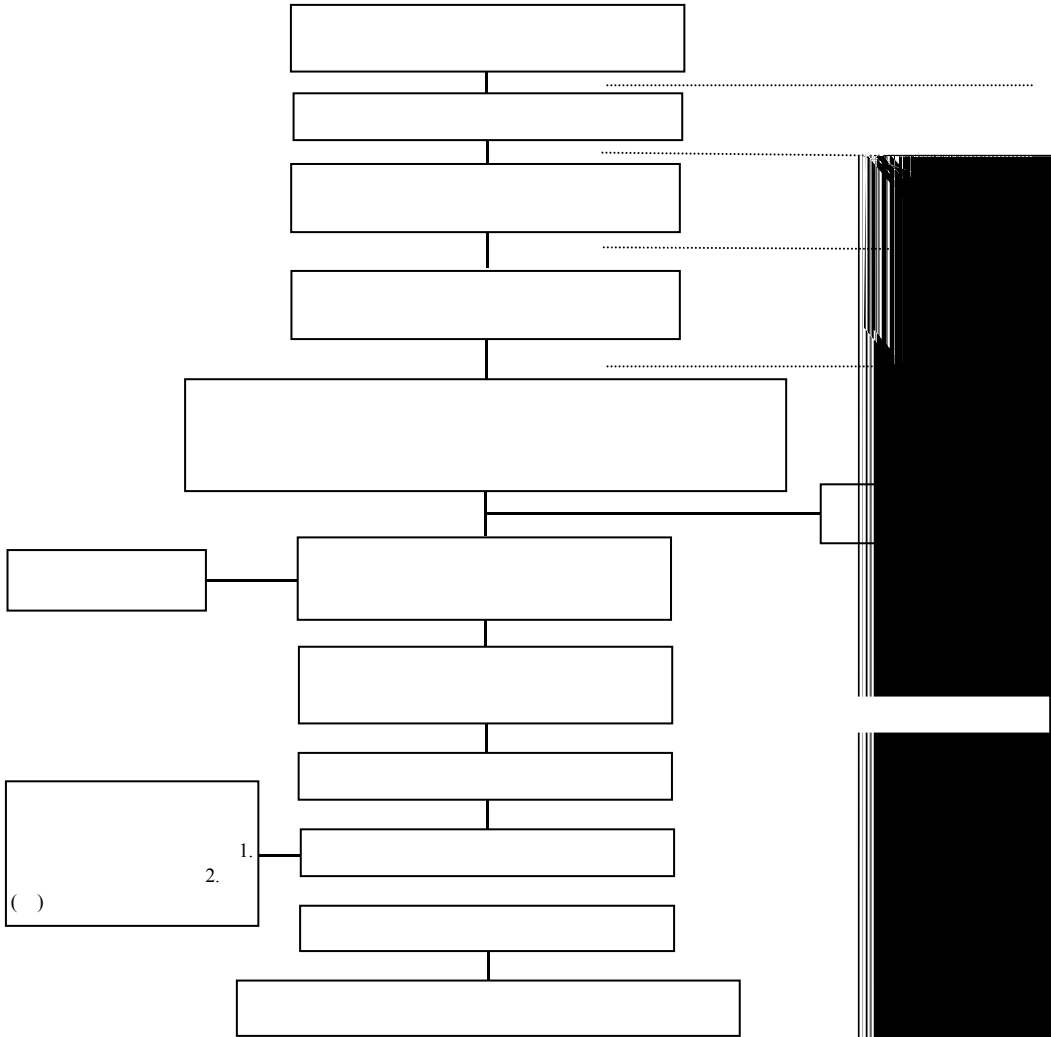
10

5

6

7

8



1

2

3

4

1

5 7

2

40 60

3

4

5

6

1

1

2

3

4

2

1

2

3

1

2

2

3

1

2

3

4

1

7

$\frac{2}{3}$

5

2

3

2 3

1

2

3

4

5

6

7

4

1

2

3

4

1

2

3

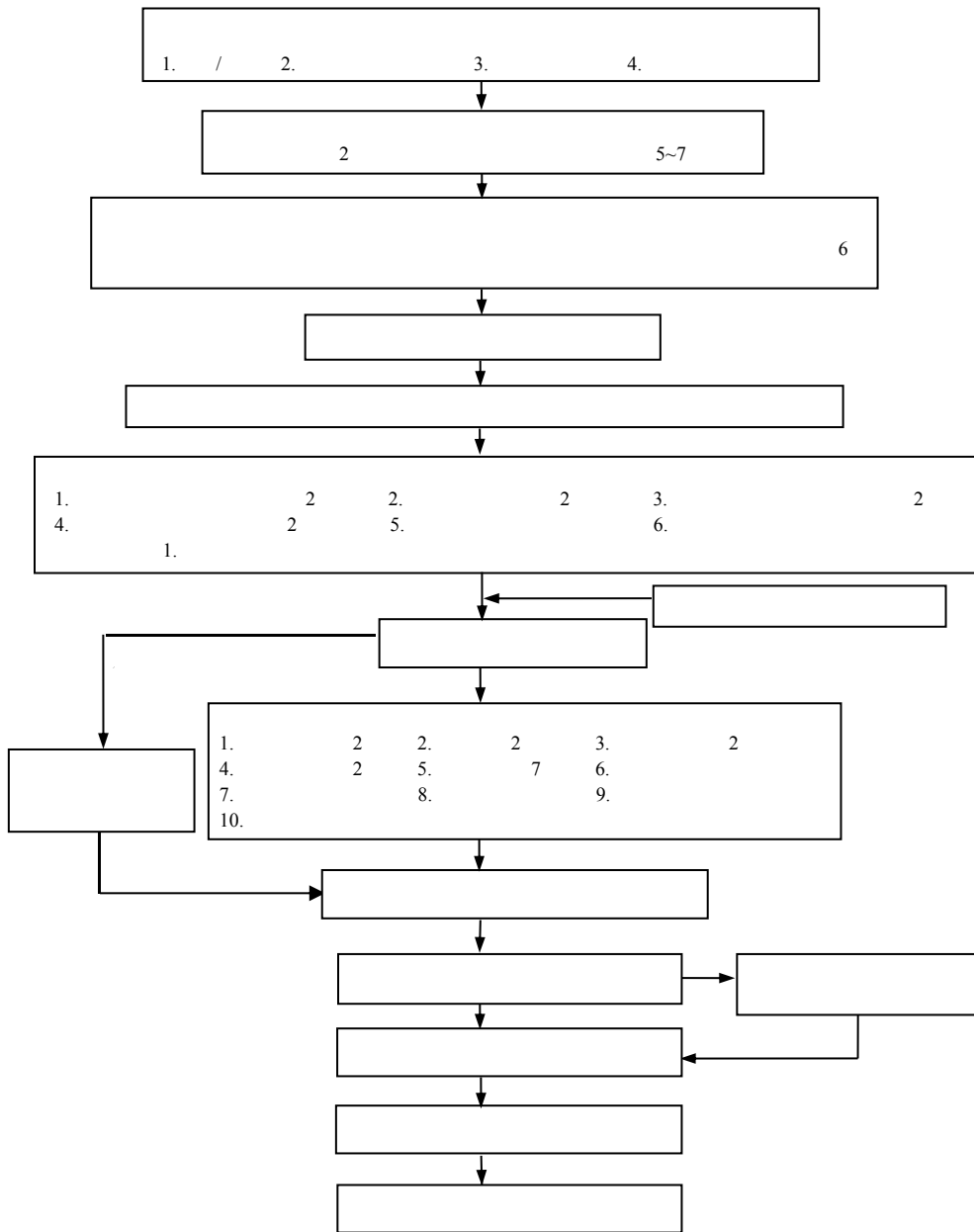
12

,

6

12

8



“ ”

“

”

1 “ ”
”

“

1 pdf
_ _LW” 10213_081202_ _LW

“10213_
zip

2

1 pdf “10213_ _ _QT”

zip

3

pdf

zip

4

pdf

“

”

1200

<http://hitgs.hit.edu.cn/ab/1d/c3426a109341/page.htm>

.zip

5

2

1

“

”1

2

2

3

2

“

”

A4

3

4

1

5

6

7

“

”

<http://hitgs.hit.edu.cn/ab/1d/c3426a109341/page.htm>

1200

8

2

3

6

4.

“ ”

“ ” (328)

2

1

2

2

2

3

2

4

2

5

1

1 7 4 10

4

(经校学位委员会第 172 次会议审议通过)

2020

2

1

2

1

2

5

3

6

4

5

1

A

B

C

D

2

1

C

B C

1

C C

3

2

A D B D

A D B D

1

1

C

D

D

4

D

2

2

C

D

4

3

C D

6

4

D D

1

2008

1.

1

2

2

2

2

1

30%

2

15

1

1 SCI 1

2 2 SCI

2

1 SCI 1

2 SCI 3 4

3

SCI 4 JCR

2 SCI 6

4

1

1 Nature Science

Acta Materialia Advanced Materials J. American Chemical Society Proc. of
National Academy of Science of USA Physical Review Letter Advanced Energy
Materials Advanced Functional Materials Biomaterials Angew Chem Int Ed
Energy & Environmental Science

SCI 6

2

1 Nature Science
 Acta Materialia Int. J. of Plasticity Additive Manufacturing J. of Mechanics and
 Physics of Solids Int. J. of Machine Tools & Manufacture Advanced Materials
 Advanced Functional Materials ACS Applied Materials & Interface Materials
 Today Physics Physical Review Letter Progress in Materials Science Materials
 Science & Engineering R

SCI 3
 5
 1 SCI 6
 2 SCI 15 5
 3 20
 6 SCI 6.0
 3.0
 7
 1 3 SCI 1
 Automatica IEEE Transactions AIAA
 2 SCI 2
 3 SCI 2
 2
 1.
 2.
 8
 1 4.0 1 [1]
 2 [2]

2

1 “ ” SCI
SCI 1.498 1.498 1.0

0.5

2 “ ” SCI 1.0 IEEE/ACM Transaction
2.0 SCI CCF A
SCI SSCI A&HCI

9

1 4 SCI 1 ≥ 4.0

2 3 SCI 1 ≥ 5.0

10.

JCR SCI 2

1

2 1 JCR SCI

1 SCI

3

11

Science Nature Nature Angewandte Chemie
International Edition Journal of the American Chemical Society Advanced
Materials Proceedings of the National Academy of Sciences of the United States
of America AICHe Journal
Chemical Engineering Science Industrial & Engineering Chemistry Research

12

1

2 SCI 2.0

13

1 4 SCI 1 ≥ 5.0

2 3 SCI 1 ≥ 6.0

14

1

2

SCI/SSCI

3

SCI/SSCI 0.5

1

UTD 27

2 SCI/SSCI

1 Thomson ESI 586

2 Thomson ESI

3

3

15
4.0
EI 3
30
SCI 7.0
SCI 3
1.5

1

ISTP EI SCI

1

2

1

— 1

2

1

1

2

2

A

3

1

A.

1

15

—

B.

1

1/4 1/3 1/2

C. 2 CSCI 1
4

1

2

2

1 A 1

2 B 2

A

B SCI

A B

3

3

1 SCI SCI

4.0 4.0

2 SCI EI SCI

EI

2

3

4

1 JCR 1

2 3 1 SCI

3 2 1 SCI EI

1

4 SCI 5

1
 SCI
 2
 3 EI
 1
 1
 3
 2
 1 SCI
 1
 DOI
 DOI
 DOI
 5
 1 SCI
 SCI
 1 A 1
 2 B 2
 3 B 1 C 2
 A JCR
 A 1
 B SCI

2

/

1

1

3

1

2

1

JCR

5%

1

2

3

1

2

1

JCR

1

3

JCR

EI

4

1

3

3
 1
 1 2 4 1
 JCR A
 1 B JCR
 C EI 4 D
 3 3 1
 A B C 1

1 1 2 4 1
 JCR

1
 PCT 1
 2
 3
 1
 4 4-6

1 2 3

7

1 SCI

EI

SCI EI

1 A 1
2 B 2
3 B 1 C 2
4 C 4

A

1 JCR
2
3
4 5 3.5

B Å0 L' ¼ j ú = Ä- q ¼•09 "F9 ' 5 p 4

A B C

8

(1) 1 1

(2) JCR 1

EI SCI 5

(3) 1 SCI A 1

(4) 1 SCI B 1 C

1

A

(1)

(2)

(3)

(4) *

B

(1) 2 2

(2)

(3) 1 2

(4) 8

(5)

(6) *

C

(1) EI / 1

(2) / 2

(3) 2

(4)

A B C

(1)

6.0 6.0

Top

(2) A 4 B 6

9

1 SCI

1 A 1

2 B 2

3 B 1 C 2

A JCR

6

B SCI

/

/

2

C 1 / EI

10

1 SCI EI

1	A	1		
2	B	2		
3	B	1	C	2
4	C	5		

A			JCR	
A				A

SCI	2.0
6	

B	SCI	SCI
	/	
C	EI	EI

1
=1/
2

1 SCI EI

1 A 1
2 B 2
3 B 1 C 2
4 C 5

A JCR A

SCI 2.0
6

B SCI SCI
/
C EI EI

1
=1/
2
11

1 2 SCI JCR SCI 1
2 3 SCI EI JCR SCI
1 SCI 1 EI 1
3 3 SCI EI SCI 1

A/B

EI 1 EI 1

1 / 1 SCI

2 / 1 EI

3

1 SCI

12

1 SCI

1 A 1

2 B 2

3 B 1 C 3 B C

B C

A

Automatica IEEE

Transactions on Automatic Control

IEEE Transactions

AIAA

SIAM Journals

SCIENCE CHINA (

JCR

)

(

)

()

()

B

SCI

) /

(

/

)

2

(

) (/
C EI
(/)

A B C

13

1 ESI

1 A 1
2 B 2
3 B 1 C 2
A
JCR CCF A

1 2 1
B JCR
CCF B

/ 2
1 2 1
1 / /

C

/

1

/

A B C

14

1

SCI SCIE SSCI A&HCI

1 A

1

2 B

2

3 B

1

C

2

A

SCI SCIE SSCI A&HCI EI

B

C

A

B

*

A

B

1 SCI

1 A

1

2 B

2

3 B

1

C

2

A

SCI

B

EI

C

A

B

*

A

B

**

1

A B C

15

1 SCI SSCI A&HCI EI

1	A		1		
2	B		2		
3	B		1	C	2

A

1		JCR		SCI/SSCI	
2	A				
3				6.0	
4					
5				5	3
6					

B

1	SCI/SSCI				
			A		
2				9	7
3					
4					

C

1	EI					
2			SCI	SSCI	EI	ISTP
		1				
3						1
2		1			1	
4						
	1					

A B C

16.

1 A 1 1

2 B 2 JCR

2 ESI 1

3 C

EI 1

3

4 2 1 EI

1

1

1

2 SCI

SCI

1

1 A 1

1 SCI 2 2

SCI

SCI/SSCI 5

3 2 SCI/SSCI

2 SCI 1

2 SCI/SSCI

1 DOI B

1 C 2

B

2 3

1 1 1

1 2 7 5

2 /

2

(

)

1

3

C

A B C

18

1 SCI

1	A	1		
2	B	2		
3	B	1	C	2
4	C	3		

A

1

A

B

SCI

500

/

/

C

EI

100

SCI

1 EI

1

1	Journal of Guidance, Control, and Dynamics	AIAA, USA	https://arc.aiaa.org/loi/jgcd
2	IEEE Transactions on Aerospace and Electronic Systems	IEEE, USA	http://ieeexplore.ieee.org/xpl/RecentIssue.jsp?punumber=7
3	Aerospace Science and Technology	Elsevier	https://www.journals.elsevier.com/aerospace-science-and-technology
4			http://www.scichina.com/

19

1	ENVIRONMENTAL SCIENCE & TECHNOLOGY (ES&T)	WATER RESEARCH(WR)	≥10(
		SCI	1
2		ISTP	
3	3	SCI	2
3		SCI	1
4	A	1	
		SCI	2
	B	1	
A			

1 ()
7 5 3
2

3 1 2
4

B

1
2 4 2
3

1

2

Environmental Science & Ecotechnology

“ESE” SCI

3 ,

DOI

4

5

20

1	A+	1	A+
	1	1	
2	/		1
	2		
1			
	2		
2	A1 A2		1
3	SCI/SSCI	2	
4	SCI/SSCI	1	
	()	1
5	SCI/SSCI	1	
1			
6			(
)	2	1
7			(
)	SCI/SSCI	1
CSSCI/CSCD	EI	2	
			1
8			

1 DOI
2 2 3 4 5 6 7

3 /
4 2016
2008 1
21

1 (SCI)
1 ≥ 3.0
2 3 3
2 EI 1 SCI 1
(
) SCI ≥ 3.0
 ≥ 18
3.0 SCI

≥9

3.0 SCI

1 2

18

1

2

1.

“

”

2.

2020

2019

3.

1

2

3

1 2

4

1

1.

2.

1

2

3

DOI

4

SCI EI

1

5.

“

”

<http://coreej.cceu.org.cn/index.html> EI

SCI SSCI

174

2020

2019

[]

1— 1,2 2—

2017 405

()

1.

1

2

2.

1

“

”

2

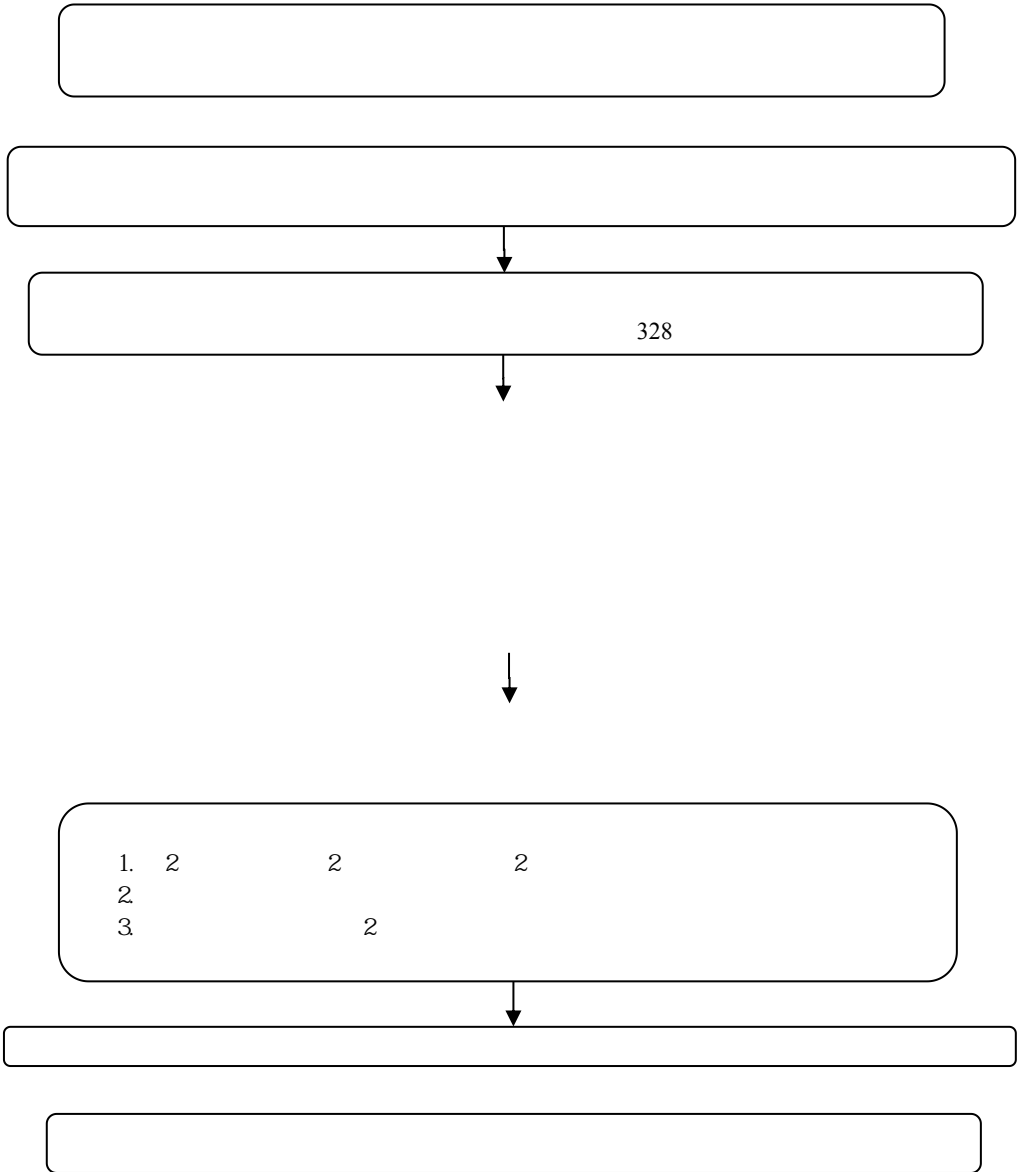
3

4

,

[2012]123

[2012]27



[2017]403

41

/

“ ” “ ”

1/3

“ ”

0.5-1

5 5 2 3 4
5 6 3 7

•

2017 9

[2014]359

,

[2017]404

()

“

”

“

”

“

”

“

”

12

2000

2013

2013

[2017]4

2015 7

- 1
- 2
- 3
- 4
- 5.

1.

2.

GB/T 16180-2014

3.

4.

5.

1

2

3

[2017]20

[2015]7

12000

8000

()

3

13

<

>

[2009]15

[2013]236

2015 7

13

20

“ ”

“ ”

“

”

“ ”

“ ”

“ ”

“ ”

“ ”

“ ”

“ ”

“ ”

“ ”

“ ”

“ ”

“ ”

“ ”

“ ”

“ ”

“ ”

“ ”

“ ”

“ ”

“ ”

“ ”

15 / 18 / 15 /
12 /

8

“

”

4000 /

“ ”

“ ”

1

“ ”

[2006]49

QQ

586

2011 44

[2009]334

1

1

2

3

QQ

4

5

6

7

8

9

586

2011 44

	1 6 _____		
			- - -

- 1.
- 2.

- 3.
- 4.

1 6
1

10

<http://ygb.hit.edu.cn>

3

12:00

15:00

3 0

1

9:00-16:00

2

3

1

2

[1999]8

- 1
- 2
- 3
- 4

30

- 1
- 2

15%

10%

3

4

“ ”

- 1.
- 2.

- 1.
- 2.

- 1.
- 2.

- 1.

1

80%

20%

“ ”

2

60%

3

75

4

5

2.

1

“ ”

80%

2

“ ”

80

50%

“

” “ ”

3

“ ”

80

50%

4 “ ”

“

”

5 “ ”

20 , C D

6

3.

1

2

80

50%

“ ” “ ”

3

C D

4

“ ”

“ ” “ ”

90%

” “ ” “ ” “ ” “ ” “ ”

1

2

3

“ ”

4

“ ”

1.

2.

3.

1.

20%

2.

5%

3.

10%

4.

3‰

5.

5%

6.

3‰

7.

1-2

8.

20%

10%

20%

10%

9.

20%

1

1

2

1

1.

2.

“

”

“

”

2020—2021

“ . ”

1.

2.

3 .

1.

2.

3.

4.

5.

6.

4 9	2020—2021
4 10 -4 19	
4 19	“ ”
4 20 -4 25	
4 25 -4 26	“ ”
4 27	

“

”

“ ”

,

4 6 -4 8	
4 9 -4 22	
4 23	
4 26 -4 30	
5 6 -5 21	

1.

/

2.

7

1.

/

2.

30%-50%

4

3

15%

3.

4.

1. (http://xg.hit.edu.cn)

1

2.

3.

2

430

2

hitxgszb@hit.edu.cn

1.

2.

3.

4.

5.

“ ”

xxx

/ / /

.....

(1)

(2)

(3)

.....

1

/ /

/

/

/

xxx

/

2

/

/

xxx

xxx

.....

.....

1.
 2.
 3.
-

1.
2.
3.

.....

1.

2.

3.

.....

x x x

/ /

/

.....

(1)

(2)

(3)

.....

1

/

/

/

/ x x x

2

/

/ x x x

328	86403220 86413071 86418305
327	86413871 86403286
319	86413771 86403087
326	86412296
318	86416419 86402619
317	86413971 86418112
301	86416113 86414004
332	86403584 86403213
	86214752 86214753

	86210082
/	86214759
	86414890
	86414665 86413266
	86416334
	86412114

	04	86413406	86415152
	18	86413406	86415152
	21	86413406	86415152
	05	86413409	86403499
	08	86413811	86413809
	09	86413945 86412943	86415970 86415905
	02	86413209	86413208
	01	86415857	86418534
	06	86402470	86413608
	11	86414109	86413245
	12	86414208	86415647
	10	86414016 86412748	86414006 86403466
	16	86414622	86416407
	26	86210478	86210478
	33	86282073 86289192	86289578
	29	86283006	86283073
	34	86281300	86281145
	32	86282116	86282835
	03	86413309	86413370

	25	86403607 86403708	86403379
	15	86414509	86412669
	28	86416944	86402021

1	8:00 - 8:50
2	8:55 - 9:45
3	10:00 - 10:50
4	10:55 - 11:45
5	13:45 - 14:35
6	14:40 - 15:30
7	15:45 - 16:35
8	16:40 - 17:30
9	18:30 - 19:20
10	19:25 - 20:15
11	20:30 - 21:20
12	21:25 - 22:15

